

32-GC	Section	cm (top)	cm (base)	Avg depth	ADJUSTED DEPTH based on MUC MINU	New calibrated Age from Christof 8-2016	Total Count	PERCENT	Acanthocythereis dunelmensis (Norman	Acetabulastoma arcticum Schornikov 19	Argilloecia spp.	Baffinicythere howei Hazel 1967
SWERUS-L2-32-GC2	1	5	7	6	3	3.636	52		0	11.5	0	0
SWERUS-L2-32-GC2	1	8	10	9	6	8.04	59		0	3.39	0	0
SWERUS-L2-32-GC2	1	10	12	11	8	8.316	22		0	0	0	0
SWERUS-L2-32-GC2	1	13	15	14	11	11.26	82		0	2.44	3.66	0
SWERUS-L2-32-GC2	1	15	17	16	13	12.11	495		0	0.2	1.62	0
SWERUS-L2-32-GC2	1	17	19	18	15	13.31	366		0	0	0	0
SWERUS-L2-32-GC2	1	20	22	21	18	18.86	187		0	2.14	0	0
SWERUS-L2-32-GC2	1	23	25	24	21	24.87	474		0	0.21	0.21	0
SWERUS-L2-32-GC2	1	27	29	28	25	32.94	1147		0	1.48	0	0
SWERUS-L2-32-GC2	1	30	32	31	28	36.02	186		0	1.61	0	0
SWERUS-L2-32-GC2	1	33	35	34	31	39.09	558		0	4.48	0	0
SWERUS-L2-32-GC2	1	35	37	36	33	42.43	591		0	2.54	0	0
SWERUS-L2-32-GC2	1	38	40	39	36	46.39	508		0	3.94	0	0
SWERUS-L2-32-GC2	1	40	42	41	38	49.03	126		0	1.59	0	0
SWERUS-L2-32-GC2	1	43	45	44	41	53	191		0	0	0	0
SWERUS-L2-32-GC2	1	47	49	48	45	58.28	31		0	0	0	0
SWERUS-L2-32-GC2	1	50	52	51	48	62.25	40		0	0	0	0
SWERUS-L2-32-GC2	1	53	55	54	51	66.21	113		0	0	0	0
SWERUS-L2-32-GC2	1	55	57	56	53	68.86	75		1.33	1.33	0	0
SWERUS-L2-32-GC2	1	58	60	59	56	72.82	11		0	0	0	0
SWERUS-L2-32-GC2	1	60	62	61	58	75.46	15		0	0	0	0
SWERUS-L2-32-GC2	1	63	65									

NOTE: For the GC ages, I subtracted 3 from the depth and used the muc dates that aligned with the



Bythocythere constricta Sars 1866	3.85	0	0	15.4	0	0	0	0	0	0	0	0	0	0	0	0
Bythoceratina scaberrima (Brady 1887)	3.39	0	0	8.47	0	0	0	0	0	0	0	0	0	0	0	0
Cluthia cluthae (Brady, Crosskey & Robe	0	0	0	0	0	0	0	0	0	0	0	0	0	0	0	0
Cluthia whatleyi Yasuhara, Stepanova, O	0	0	0	1.22	0	0	0	0	0	0	0	0	0	1.22	0	0
Cythere lutea M'Yller 1785	0.81	0.81	0	0	0	0	0	0	0	0	0	0	0	0	0.81	0
Cytheretta teshekpukensis Swain 1963	0	0	0	0	0	0	0	0	0	0	0	0	0	0	0.27	0
Cytheromorpha macchesneyi (Brady and	1.07	0	0	0	0	0	0	0	0	0	0	0	0	0	1.07	0
Cytheropteron angulatum Brady and Rol	2.74	0.21	0	0	0	0	0	0	0	0	0	0	0	0	0	0
Cytheropteron arcticum Neale and Howe	1.83	0.35	0	0.09	0	0	0	0	0	0	0	0	0	0	0.17	0
Cytheropteron arcuatum Brady, Crosske	0.54	0	0	1.08	0	0	0	0	0	0	0	0	0	0	0	0
Cytheropteron biconvexa Whatley and M	0.54	0	0	0.9	0	0	0	0	0	0	0	0	0	0	0.18	0
Cytheropteron champlainum Cronin 198	0.51	0.17	0	1.02	0	0	0	0	0	0	0	0	0	0	0	0
Cytheropteron elaei Cronin 1989	0.39	0	0	0.79	0	0	0	0	0	0	0	0	0	0	0.2	0
Cytheropteron excavaolatum Whatley an	0	0	0	5.56	0	0	0	0	0	0	0	0	0	0	0	0
Cytheropteron higashikawai Ishizaki 198	0	0	0	0	0	0	0	0	0	0	0	0	0	0	0	0
Cytheropteron inflatum Brady, Crosskey	0	0	0	0	0	0	0	0	0	0	0	0	0	0	0	0

at interval

[illegible]

[illegible]

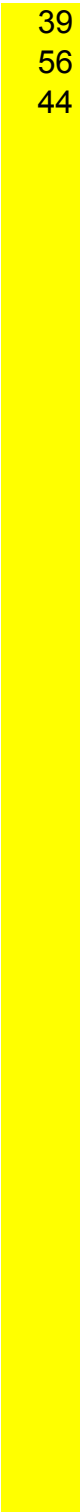
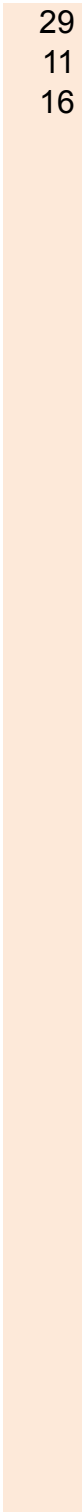
[illegible]

% all Cytheropt	32-MC													
		interval	avg depth	<i>Acetabulastoma arcticum</i> Schornikov 1970	<i>Argilloecia</i> spp.	<i>Bythocythere constricta</i> Sars 1866	<i>Bythoceratina scaberrima</i> (Brady 1887)	<i>Cluthia cluthae</i> (Brady, Crosskey & Roberts	<i>Cluthia whatleyi</i> Yasuhara, Stepanova, Okah	<i>Cytheretta teshekpukensis</i> Swain 1963	<i>Cytheromorpha macchesneyi</i> (Brady and Cr	<i>Cytheropteron arcuatum</i> Brady, Crosskey &	<i>Cytheropteron higashikawai</i> Ishizaki 1981	<i>Cytheropteron inflatum</i> Brady, Crosskey & F
17.3	32MC4	0-1	0.5	6.5	0.5	3	0	0	5.3	0	0	0	1.4	0
22	32MC4	1-2	1.5	11	0.4	2.7	0	0	7.8	0	0	0.2	0.4	0
18.2	32MC4	2-3	2.5	8.7	1.4	2.3	0	0	13	0	0	0	1.4	0
28	32MC4	3-4	3.5	8.7	1.8	2.6	0	0	14	0	0	0	2.4	0
12.7	32MC4	4-5	4.5	8	4.9	1.2	0	0	9.4	0	0	0	2.1	0
10.4	32MC4	5-6	5.5	7	8.4	2.6	0	0	1.8	0.1	0	0	1	0
13.9	32MC4	6-7	6.5	3.3	7	2.3	0	0	6.3	0	0	0	1.7	0
9.49	32MC4	7-8	7.5	4.1	4.6	2.4	0	0	11	0	0	0	1.6	0
14.1	32MC4	8-9	8.5	3.3	5	0.7	0	0	7.7	0	0	0	2.3	0
21.5	32MC4	9-10	9.5	2.7	2	1.7	0	0	3.3	0	0.3	0	2.7	0
20.3	32MC4	10-11	10.5	1.3	3.9	0	0	0	5.2	0	0	0	2.6	0
14.4	32MC4	11-12	11.5	0.5	2.5	0.5	0	0	1	0	0.5	0	3.8	0
16.7	32MC4	12-13	12.5	0.2	4.8	0.9	0	0	0	0	0.4	0	3.7	0
3.97	32MC4	13-14	13.5	0.7	2	1.7	0.7	0	0	0	0.3	0	3.6	0
11.5	32MC4	14-15	14.5	1	2.3	0.7	0.3	0	0	0	0.3	0	1	0
0	32MC4	15-16	15.5	0.3	2.6	1	0.3	0	0	0	0	0	2.6	0
7.5	32MC4	16-17	16.5	0.3	1.3	3.7	0	0	0	0	0	0	0.7	0
23	32MC4	17-18	17.5	1.4	0.5	3.8	0	0	0.2	0	0	0	1.4	0
30.7	32MC4	18-19	18.5	1.7	0.3	1.7	0	0	0	0	0	0	0.7	0
45.5	32MC4	19-20	19.5	5.2	0	2.6	0.7	0	0	0	0.3	0	1.3	0
20	32MC4	20-21	20.5	3.3	0.3	2.9	0	0	0	0	0	0	2.3	0
	32MC4	21-22	21.5	1.5	0.3	3.9	0.3	0	0	0	0	0	0.6	0
	32MC4	22-23	22.5	1.6	0.2	4	0.2	0	0	0	0	0	0	0
	32MC4	23-24	23.5	0.6	0	6.1	0.9	0	0.3	0	0	0	0.6	0
	32MC4	26-27	26.5	2.3	0	2.7	0	0	0	0	0	0	0	0
	32MC4	27-28	27.5	1.8	0	1.4	0.2	0	0	0	0	0	0.4	0
	32MC4	28-29	28.5	4.6	0	2.2	0.4	0	0	0	0	0	0	0

32MC4	29-30	29.5	7.6	0.3	0	0.3	0	0	0	0	0	0	0
32MC4	30-31	30.5	5.3	0	0.8	0.2	0	0.2	0	0	0	0	0
32MC4	31-32	31.5	4.9	0	1.3	0	0	0.7	0	0	0	0	0

<i>Cytheropteron parahamatum</i> Yasuhara, Ste																	
<i>Cytheropteron scoresbyi</i> Whatley and Eyno																	
<i>Cytheropteron sedovi</i> Schneider 1969																	
<i>Cytheropteron suzdalskyi</i> Lev 1972																	
<i>Cytheropteron</i> spp.																	
Cytheropteron TOTAL																	
<i>Eucythere</i> sp.																	
<i>Eucytherurua delineata</i> Whatley and Eynon																	
<i>Heterocyprideis fascis</i> (Brady and Norman 1																	
<i>Heterocyprideis sorbyana</i> (Jones 1857)																	
<i>Krithe hunti</i> Yasuhara, Stepanova, Okahash																	
<i>Krithe minima</i> Coles, Whatley, & Moguilevsk																	
<i>Microcythere medistriata</i> (Joy and Clark 197																	
<i>Paracytherois</i> spp.																	
<i>Pedicythere</i> spp.																	
<i>Polycopse</i> spp.																	
<i>Propontocypris</i> sp.																	
1.3	9.4	0.3	0	0.1	13	0	0	0	0	1.4	0	0.7	0.9	0.3	58	1.4	
1.1	10	0	0	0	12	0	0	0	0	2.1	0	0.8	3.6	0	50	0.6	
2.6	18	0	0	0	21	0	0	0	0	2.1	0	0.2	6.8	1	29	1.7	
4.7	14	0	0	0	21	0	0	0	0	1	0	0.8	8.1	0.4	24	0.4	
6.8	25	0	0	0	33	0.2	0	0	0	2.4	0	0	5.2	0.2	14	1.4	
7.8	17	0	0	0	26	0	0	0	0	3.1	0	0.1	7.3	0.9	18	0.1	
6.6	12	0.3	0	0	20	0	0	0	0	7.6	0	0	6.6	1	9.9	0	
8.9	13	0.3	0	0	24	0	0	0	0	6.8	0.8	0.3	6.8	0.5	9.2	0	
8	9.3	0	0	0	20	0	0	0	0	7.3	2	0	2	0	8.7	0	
15	13	0	0	0	30	0	0	0	0	9	0	0	2.7	0.3	13	0.3	
24	8.5	0	0	0	36	0	0	0	0	5.9	0	0.3	6.2	0.7	21	1.6	
17	14	0.5	0	0	36	0	0	0	0	1	0	1.8	1.8	2	46	1	
12	13	1.1	0	0	30	0	0	0	0	0	0	2.2	3.5	2.2	48	0.9	
11	10	3	0	0	28	0	0	0	0	0.3	0	5	0.7	2	49	1	
5	8.9	2.3	0	0	17	0	0	0	0	0.3	0	1.3	3.3	2.6	57	0.7	
3.1	7.2	4.9	0	0	18	0	0	0	0	0.5	0	2.8	2.1	2.3	56	0.5	
3.3	6.3	13	0	0	24	0	0	0	0	1	0	4	2.7	0.7	58	0.3	
1.6	6.4	16	0	0.2	26	0	0	0	0	0.3	0	2.4	0.8	0	56	0	
1	9.6	17	0	0.3	29	0	0	0	0	0.3	0	5.3	1	0.3	59	0.3	
0	6.2	12	0	0	19	0	0	0	0	0.3	0	2.6	0	1.6	65	0	
2.3	17	12	0	0	34	0	0	0	0	0.3	0	5.6	0.7	2.3	47	0	
1.8	9.8	11	0	0	23	0	0	0	0	0.6	0	5.4	2.4	1.2	58	0	
0.4	11	13	0	0	25	0	0	0	0	0.4	0	6.9	0.2	2.7	57	0	
0	8.1	11	0	0	20	0	0	0	0	0.6	0	3.8	0	4	52	0	
0	9.3	16	0	0.3	25	0	0	0	0	1.7	0	4.7	0.3	0.7	57	0.3	
0	7.6	11	0	0	19	0.2	0	0	0	2.8	0	5.4	0.2	1.6	64	0.8	
0	5.2	11	0	0	16	0	0	0	0	4.2	0	4.8	0	0.4	61	0.4	

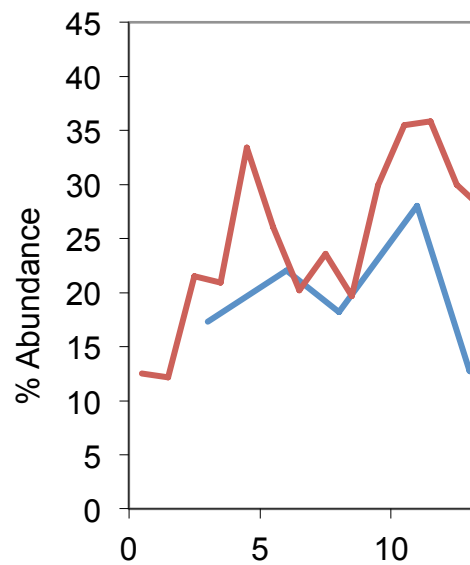
0.7	9.3	19	0	0	29	0.3	0	0	0	6.6	0	7.9	0	0.3	39	0.3
0	2.1	9	0.2	0	11	0	0	0	0	7.6	0	6.9	1	0.5	56	0.2
0	2.6	13	0	0	16	0.3	0	0	0	7.8	0	6.2	1.3	0.3	44	0.3



<i>Pseudocythere caudata</i> Sars 1866								
<i>Rabilimis mirabilis</i> (Brady 1868)								
<i>Sarsicytheridea bradlii</i> (Norman 1865)								
<i>Sclerochilus</i> spp.								
<i>Semicytherura complanata</i> (Brady, Crosske								
<i>Semicytherura</i> spp.								
Other								
Indeterminate/IRO								
Total								
1.5	6.8	0	0	0	0	0.7	0	100
0.6	7.8	0	0	0	0	0.2	0	100
1.6	9	0	0	0	0	1.2	0	100
1	15	0	0	0	0	0.4	0	100
1.9	17	0	0	0	0	0.9	0	100
0.9	23	0.1	0	0	0	0.4	0	100
1.3	34	0	0	0	0	0	0	100
1.1	28	0	0	0	0	0	0	100
1.3	41	0	0	0	0	1.7	0	100
1.3	33	0	0	0	0	0.3	0	100
1.6	16	0	0	0	0	1.3	0	100
2	3	0	0	0	0	0.5	0	100
4.6	2.2	0	0	0	0	0	0	100
9.6	0	0	0	0	0	0	0	100
12	0	0.3	0	0	0	0	0	100
14	0	0	0	0	0	0	0	100
4.3	0.3	0	0	0	0	0	0	100
8.8	0	0	0	0	0	0	0	100
1	0.3	0	0	0	0	0	0	100
1.6	0	0	0	0	0	0.3	0	100
2.9	0	0	0	0	0	0.7	0	100
3	0	0	0	0	0	0	0	100
0	0	0	0	0	0	1.6	0	100
10	0.9	0	0	0	0	0.6	0	100
3.7	1	0	0	0	0	0	0	100
0.8	1.6	0	0	0	0	0	0	100
2	3.8	0	0	0.2	0.4	0	0	100

%Abund vs CORE DEPTH

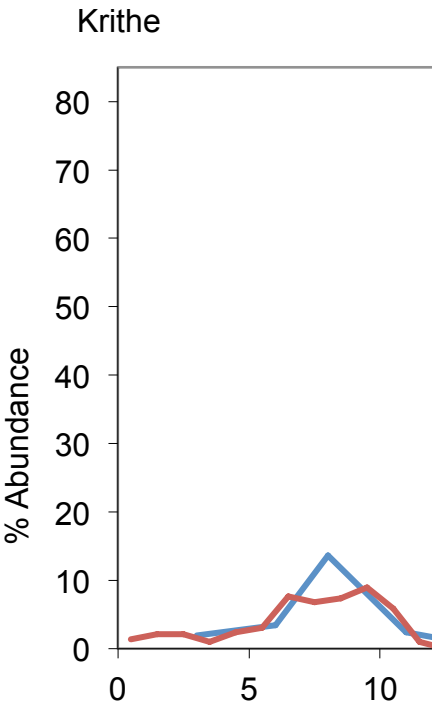
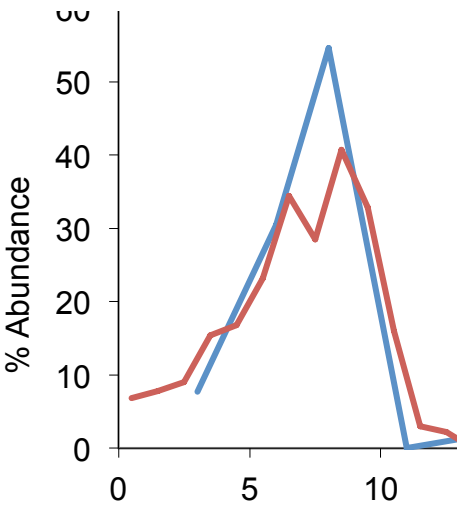
All Cytheropteron species corr



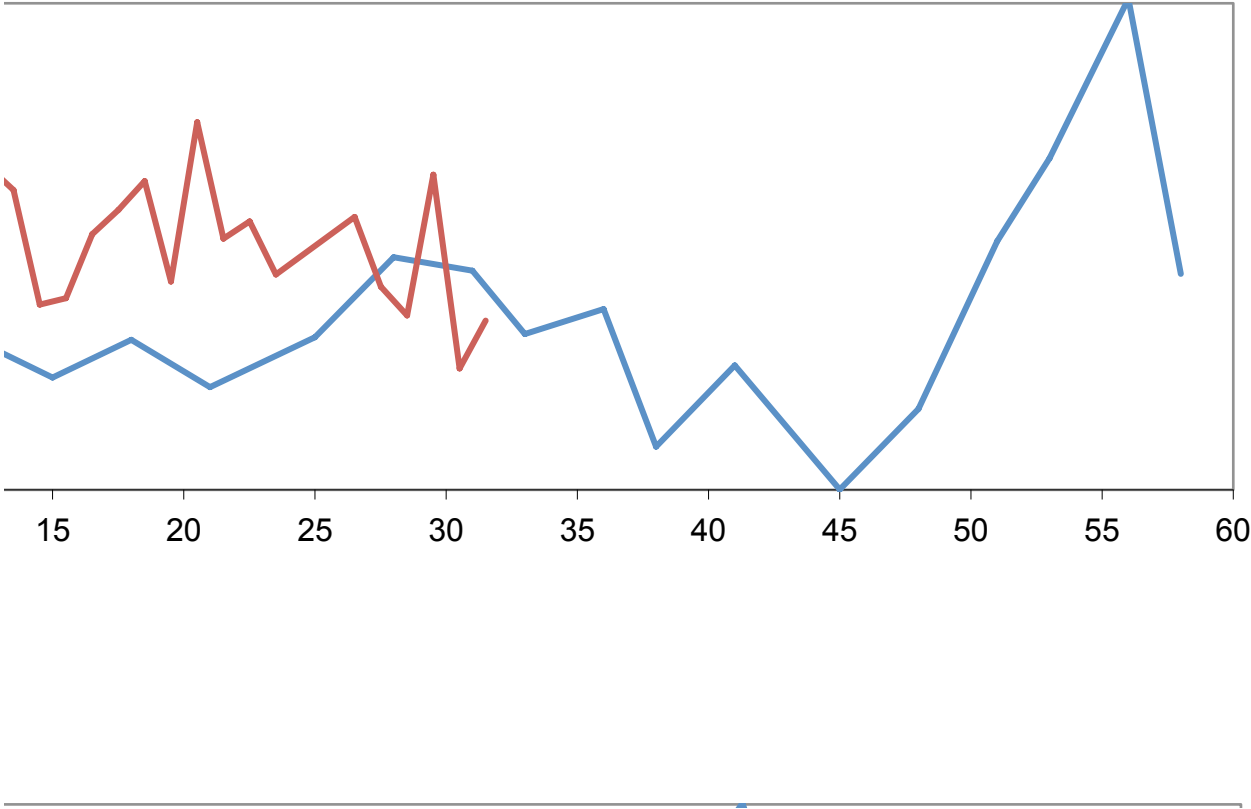
Rabilimis

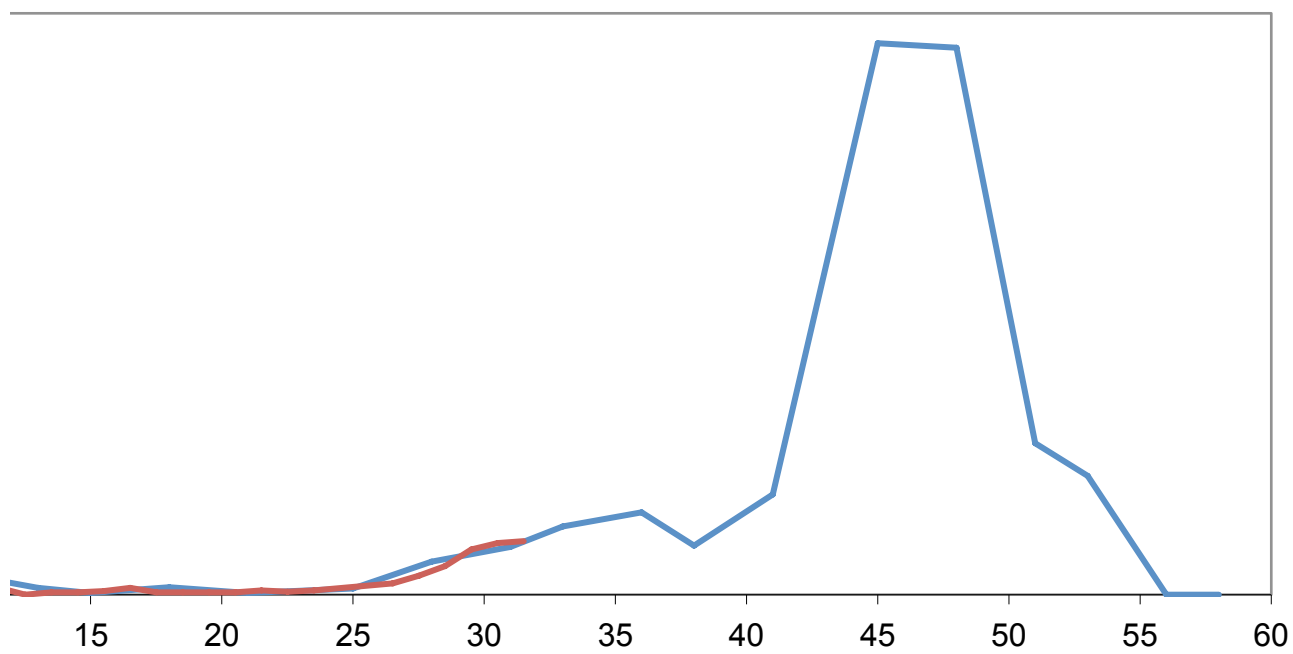
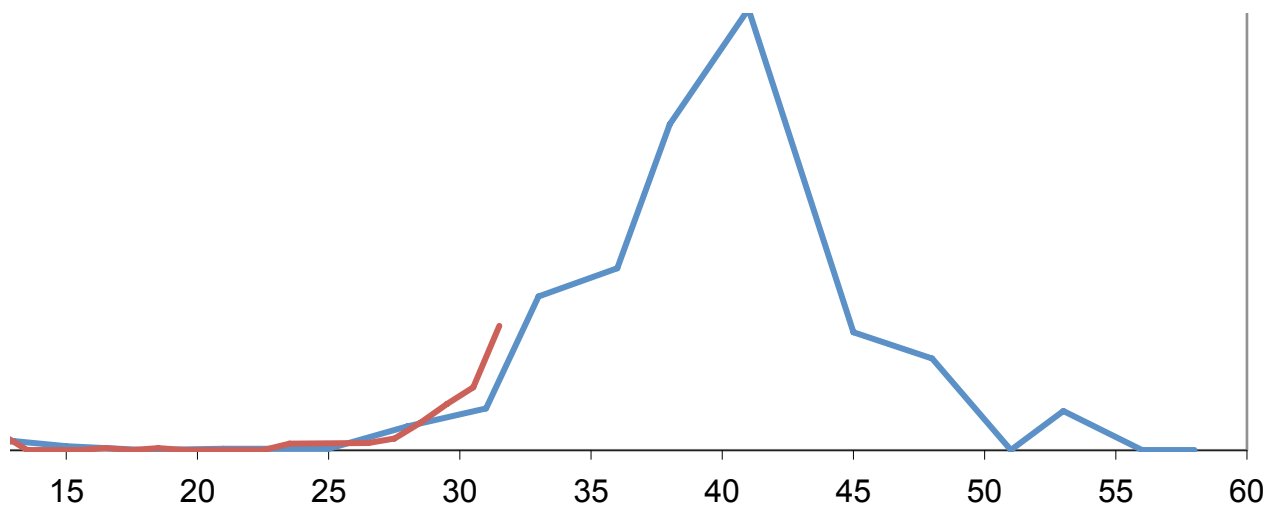
60

2	6.3	0	0	0	0	0	0	100
1.2	8.6	0	0	0	0	0.1	0	100
0.7	17	0	0	0	0	0	0	100

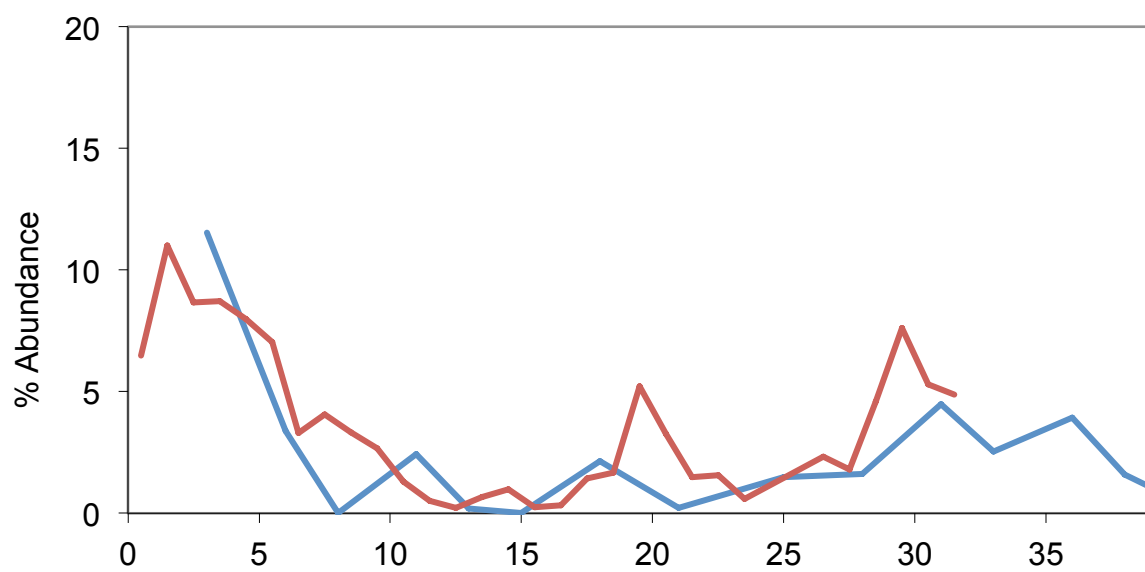


ibined



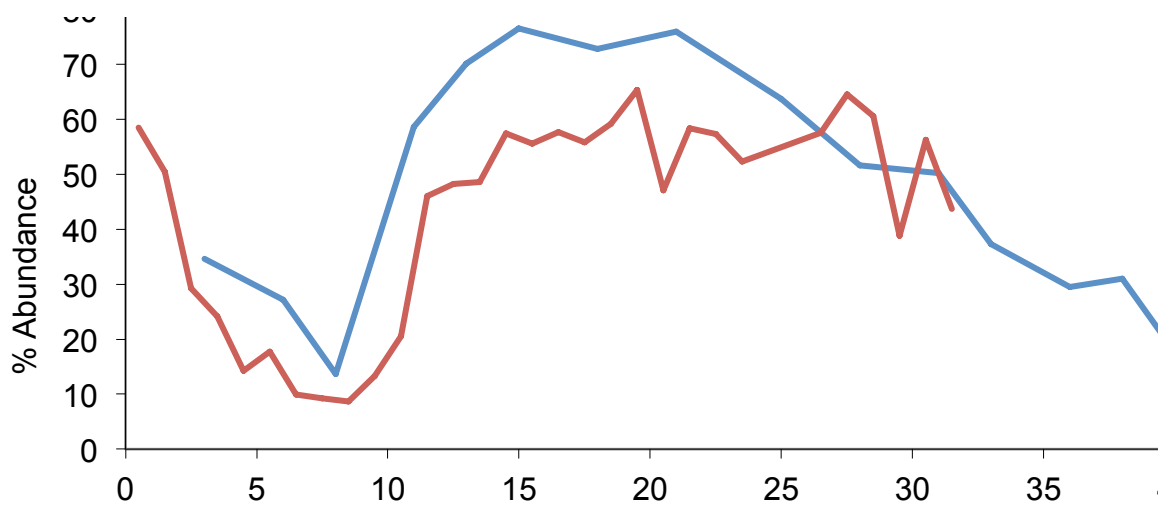


Acetab



Polycop

80



Pseudocythere

